

Congratulations for choosing our high-quality chassis frame rails reinforcement kit. We feel privileged to be able to provide products of our efforts to the enthusiast community. Our rails deliver superior performance and will be of great benefit to your MX-5. By your purchase you also support future development of new, custom made performance parts to make our cars even more fun.

We recommend to quickly read through the whole guide before actually starting the job.

**Contents:**

- 1 x Frame rail – driver side
- 1 x Frame rail – passenger side
- 3 x Mount for plastic line holder

**Fixings pack:**

- 3 x Bolt M6x10
- 3 x Plastic washer M6
- 24 x Bolt M8x20
- 24 x Locking nut M8
- 24 x Small washer M8
- 24 x Large washer M8

There is a spare piece from each item.

**Installation equipment needed:**

- Spanner set
- Allen key set
- Drill Ø 8.5 mm
- Drilling machine or screwdriver
- Body filler or silicone
- Base colour or other rust stopper



## Before installation:

You need to have the original frame rails in somewhat straight shape to fit the new rails over them, which means you might need to first work on them. We also recommend to treat the chassis for rust on places which will be covered with your new rails before installation. Finally, you'll need a hoist/jack/pit to have sufficient space to work on your car.

## Installation procedure:

Frame rails are held on the car via bolts going through the floor. The first step is to remove the interior – seats and carpets – to be able to drill the holes (photo). Seats are held in place via 4 large bolts which can be removed quite easily. To remove the carpet, you might need to unbolt or remove various bits like the sill plates/covers. Be careful if prying out some of the plastic clips, they can break very easily.



Under the car loosen the brake and fuel lines from the holders that need to be removed completely. Separate the plastic part from the metal part, dispose of the metal and clean the plastic. Then mount the plastic holder to the new mount provided with our rails (photo).



As you might have noticed, the frame rails mounting holes have different distance between them. The end with less space between holes should be facing the front of the car. Put your new rails over the original frame rails and move them as forward as possible.

While holding the rail in desired place, drill a hole on one end, put a bolt with a nut through the hole to fix the rail in position. If you are doing this job alone, you might need to first mark the spot for the hole with a marker, then drop the rail and proceed with drilling. After frame rail is held in position with the first bolt, drill a second hole on the other end and fix the rail in place with the second nut and bolt.

With rail in place drill all other remaining holes and repeat the process for other side of the car. With all the holes done remove the rails and treat the drilled surface with your favourite rust protection (e.g. base paint).

NBFL (MK2.5) only:

In case you have a NBFL you'll notice the brackets/supports on which you mount the cross brace are in the way. They are bent on the edge which you need to either straighten up or cut off (photo).



Before putting the rails in place permanently:

1. We recommend to practice putting the rails in place a few times to make sure you don't smudge the filler/silicone all over your floor trying to fit them.
2. The correct order of fixings, from up to bottom:
  - bolt
  - large washer
  - car floor
  - frame rail
  - small washer
  - locking nut

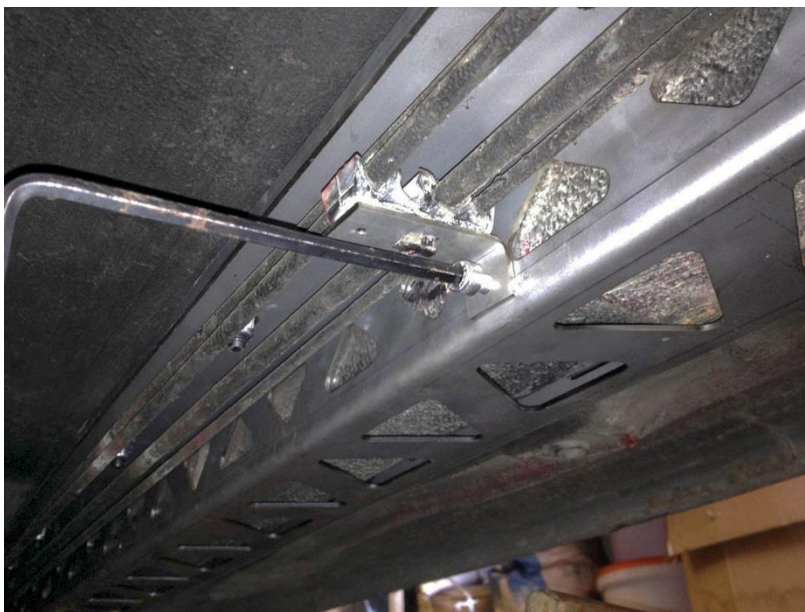


After the paint has dried off, put some filler or silicone around the holes on rails (or both – on rails and on floor) to make sure it will seal properly (photo). Install the rails and tighten the nuts – we advise to do the tightening in two stages. There is no recommended torque but we're confident the stainless steel bolts and nuts can handle a reasonable amount (applied by hand), but there's no need for anything crazy.

With the rails in place put the brake and fuel lines back to the plastic holder and mount them to the frame rail with provided bolts (photo).

Finally put the interior carpets back and mount the seats.

That's it! We hope you'll enjoy your stiff car as much as we do ours.



Should you have any questions or you would like to share your feedback, please let us know via [hello@skidnation.com](mailto:hello@skidnation.com). You can also check out our social media [facebook.com/skidnation](https://www.facebook.com/skidnation) and [instagram.com/skidnation](https://www.instagram.com/skidnation) for the latest updates.